

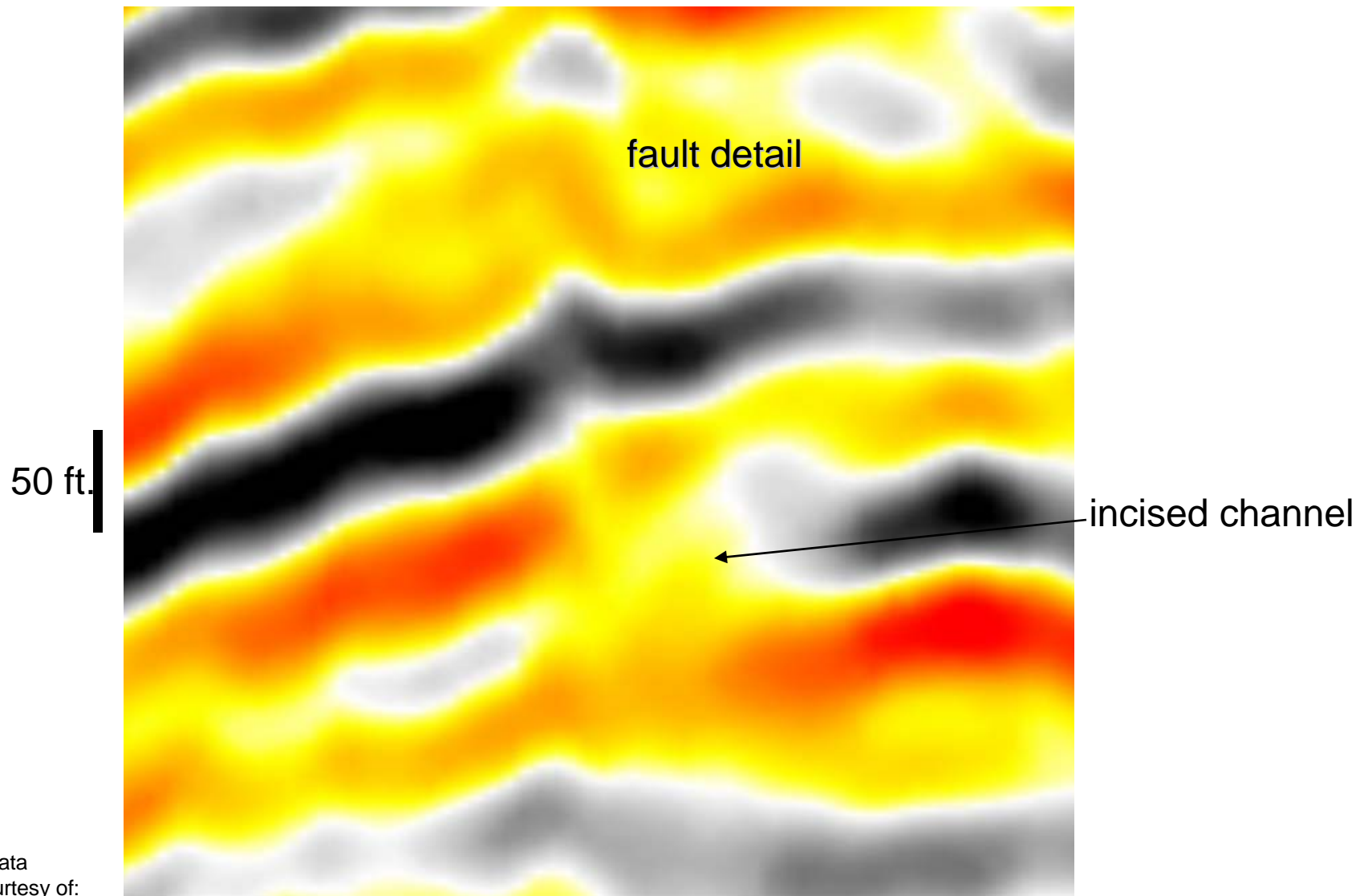
High-Resolution Test Results:
Using Windowed Principal Components (PCA)
& General Regression Neural Networks
(GRNN), post-stack processing on
3D Vibroseis Amplitude Data
Piceance Basin, Colorado

January 2004

Scheevel Geo Technologies, LLC 2004
www.scheevel.com – US phone: 970-263-9165



Original Amplitude (detailed-view, depth converted)

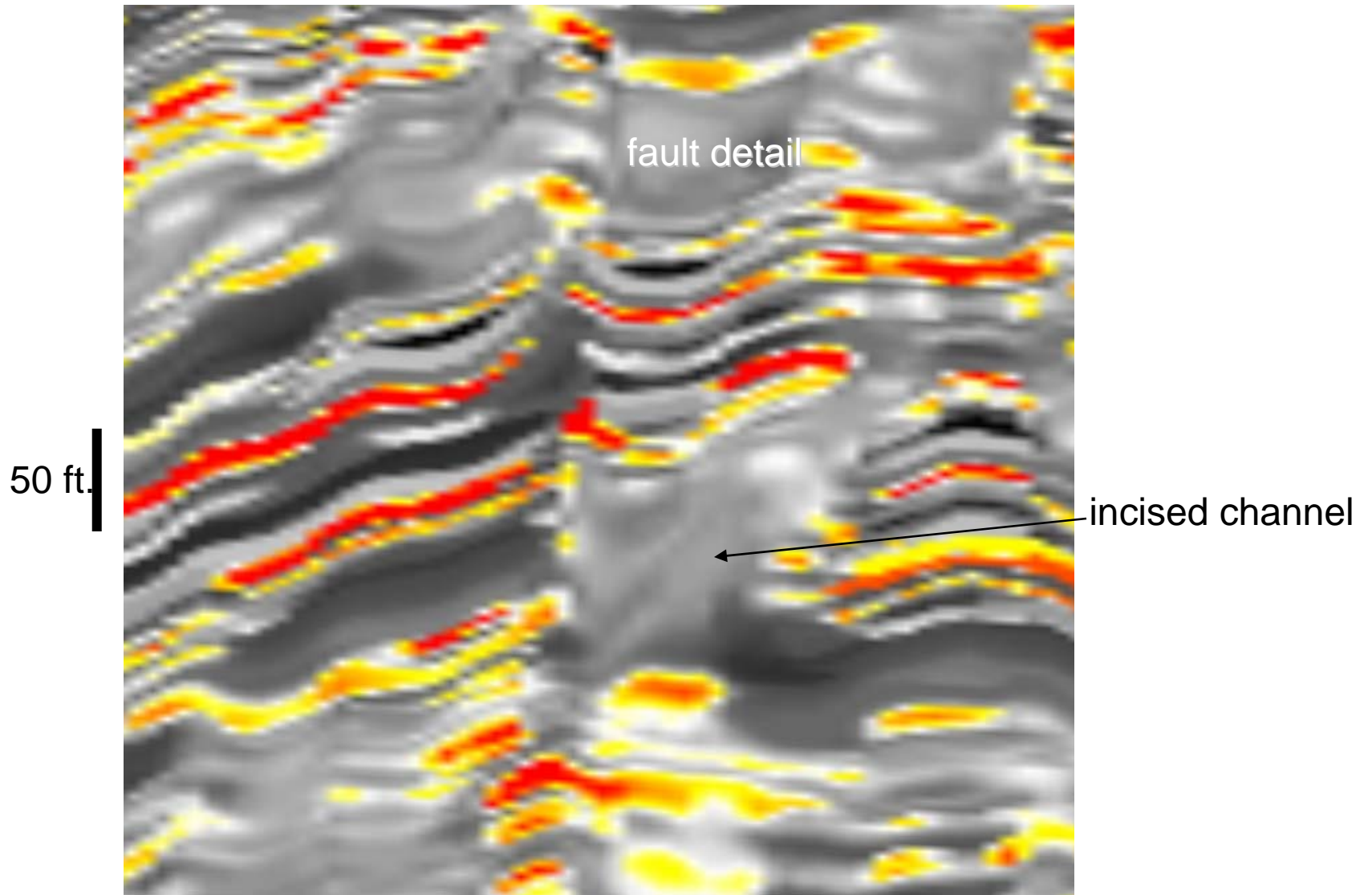


Amplitude Data
provided courtesy of:
Seitel and Williams Production -Denver
January 2004

Scheevel Geo Technologies, LLC 2004
www.scheevel.com – US phone: 970-263-9165



Pseudo-RhoB (detailed-view, depth converted)



January 2004

